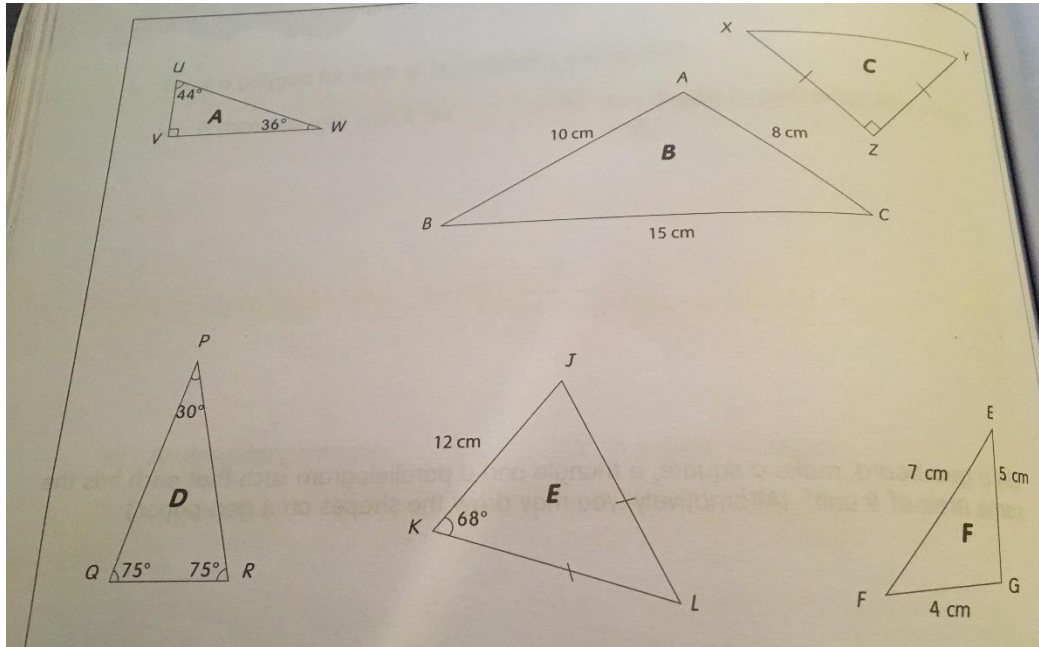


**Chapter 12- Plane shapes, Chapter 15 –Solid figures**

**A. Fill up**

1. \_\_\_\_\_ is a triangle having all the three sides equal.
2. Isosceles triangle is a triangle having \_\_\_\_\_ sides equal.
3. \_\_\_\_\_ is a triangle having one of its angle equal to 90 degree.
4. Scalene triangle is a triangle having \_\_\_\_\_ sides equal.
5. A polygon having all four sides equal, but all angles are not equal to 90 degree. \_\_\_\_\_.
6. Name the polygon that have only one pair of opposite sides parallel \_\_\_\_\_.

**B. Answer the questions using following triangles**



**1. List the triangles that are isosceles but not right angled.**

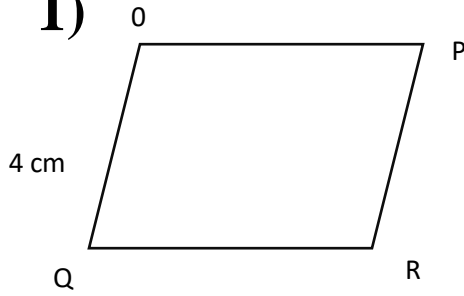
**2. In triangle A, the shortest side is**

**3. In triangle B, the largest angle is**

**4. In triangle C, the longest side is**

**5. In triangle D, the shortest side**

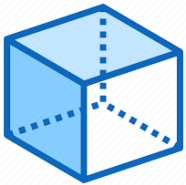
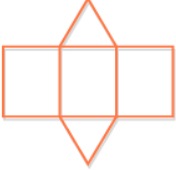
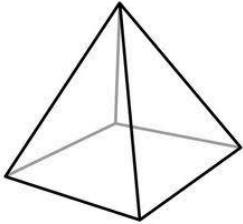
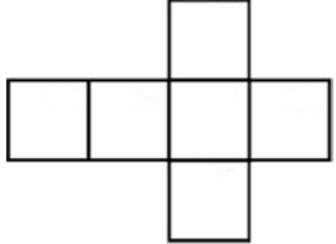
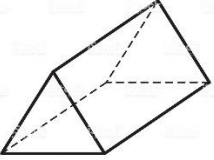
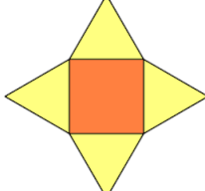
**C. 1)**



**OPQR is a parallelogram. OQ is 4 cm. OP is 2 times the length of OQ. Find the length of QR.**

**QR =  cm**

**D. Match the solids with their nets.**

Solids	NETS
 <p data-bbox="544 1039 609 1071">Cube</p>	
 <p data-bbox="576 1386 738 1459">Square based pyramid</p>	
 <p data-bbox="324 1858 422 1879">Triangular prism</p>	

**E. Complete the table.**

Solids	Name of solid	Properties		
		Types and number of faces	Types and number of edges	Number of vertices
