



## AL MOATTASEM INTERNATIONAL SCHOOL

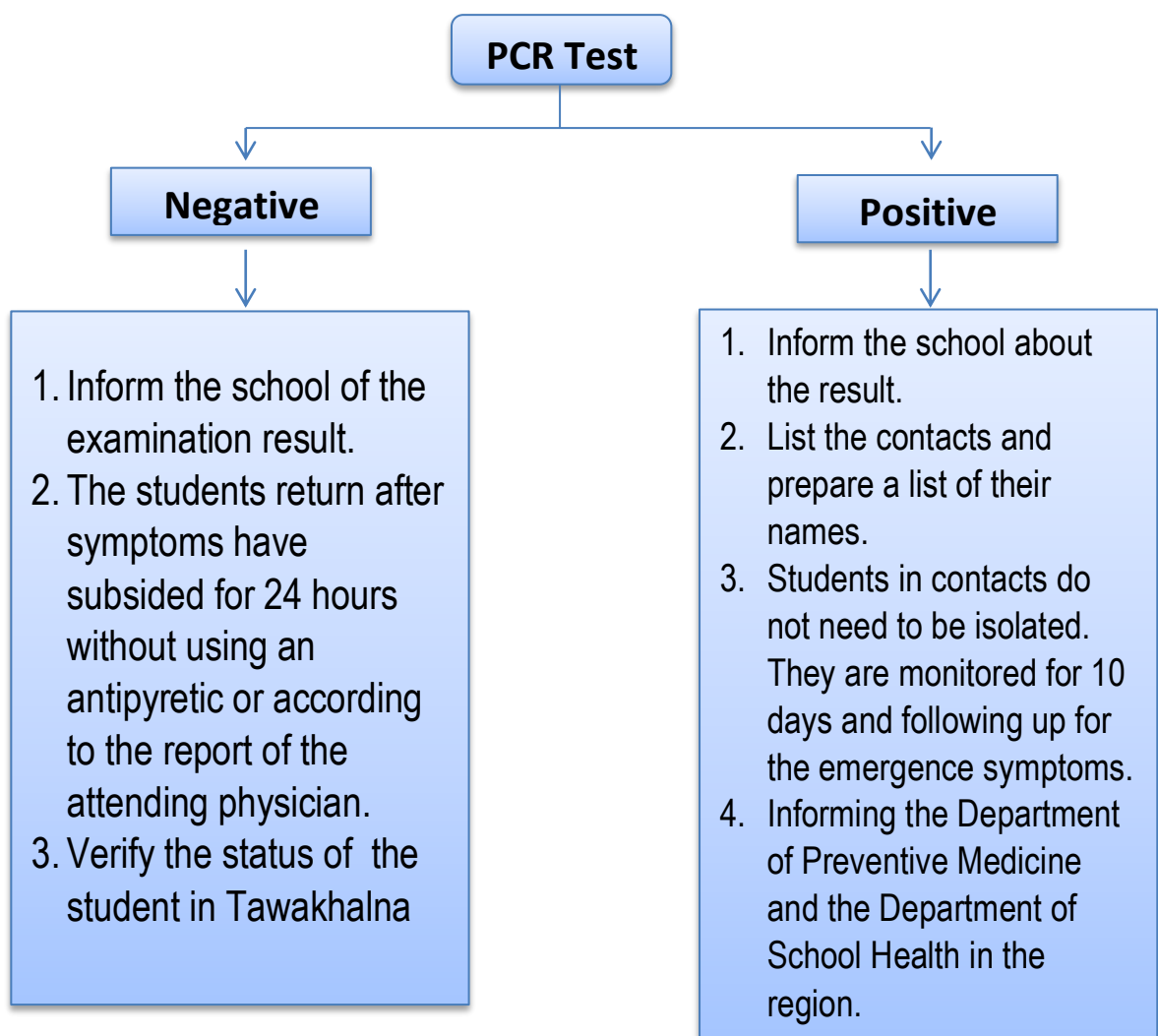
# ***Protocol to be followed while dealing with the confirmed and suspected cases of COVID-19***

## Definitions

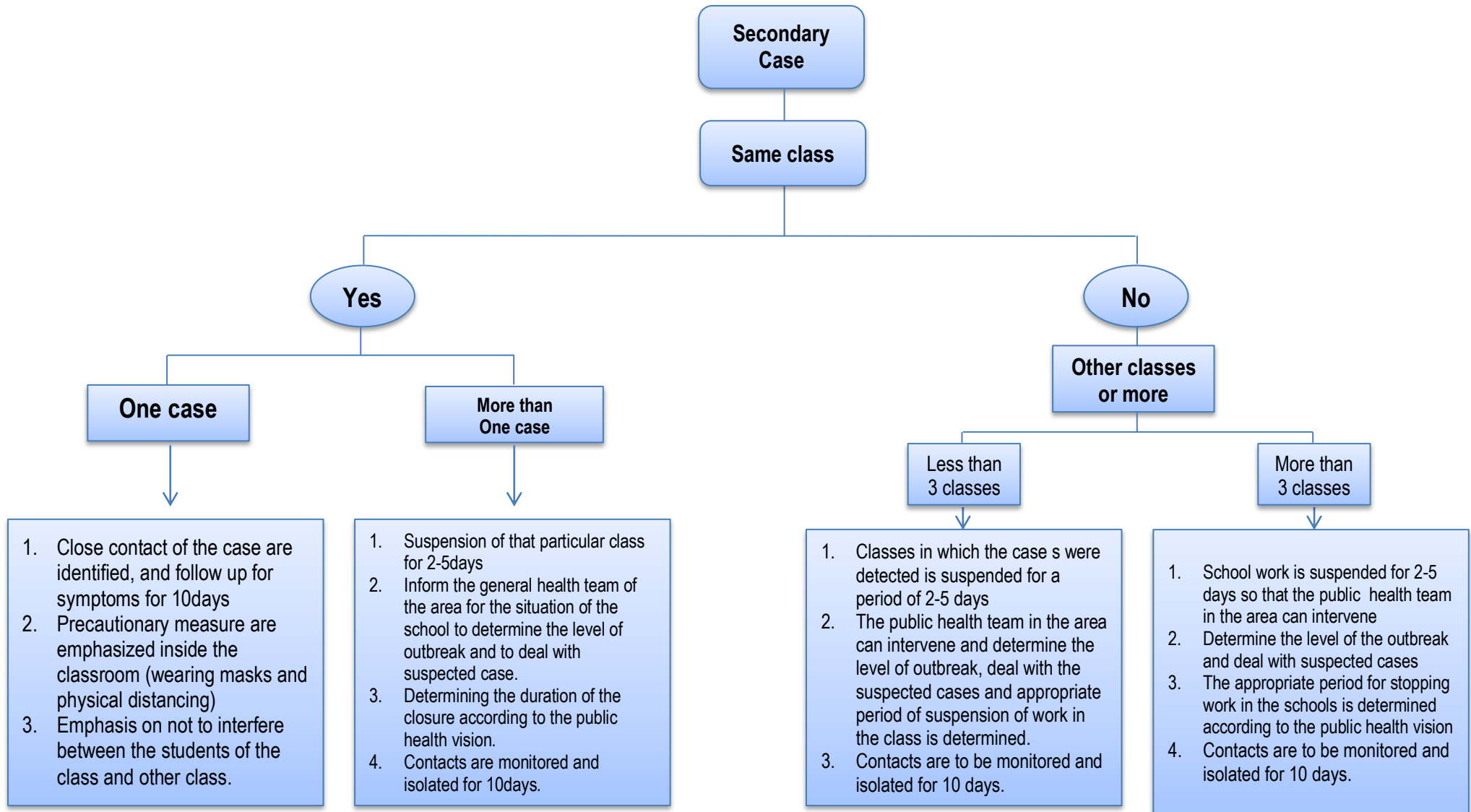
Cases	Definitions
Suspected case	It is case that shows suspected (respiratory) symptoms of COVID-19 disease (high temp, coughing, sneezing, shortness of breath, pain in the joints etc.
Confirmed case	It is the case that is confirmed by a laboratory test the PCR.
Secondary case	It is the case that is confirmed negative by a laboratory test (the PCR). There is a close contact history with case and no contact history with a source outside the school.
Close contact	It is the close contact (less than a meter and a half) and in a period longer than 15 minutes without wearing a mask or wearing it incorrectly.

**Procedure to be followed while detecting a suspected case for students (over 12 years old and full vaccinated):**

- Isolate the case in the room designated for isolating suspected cases.
- Disinfection and sterilization of the places where the student was present.
- Communicate with the student's guardian to take the student and direct him to take the prescribed procedures by the Ministry of Health regarding suspected cases.
- Follow up the case and direct it to the necessity of taking the swab for a PCR test.
- Follow up the result of the swab and the status of the student in Tawakhalna application.
- Informing the relevant departments in the region (preventative medicine – school health)

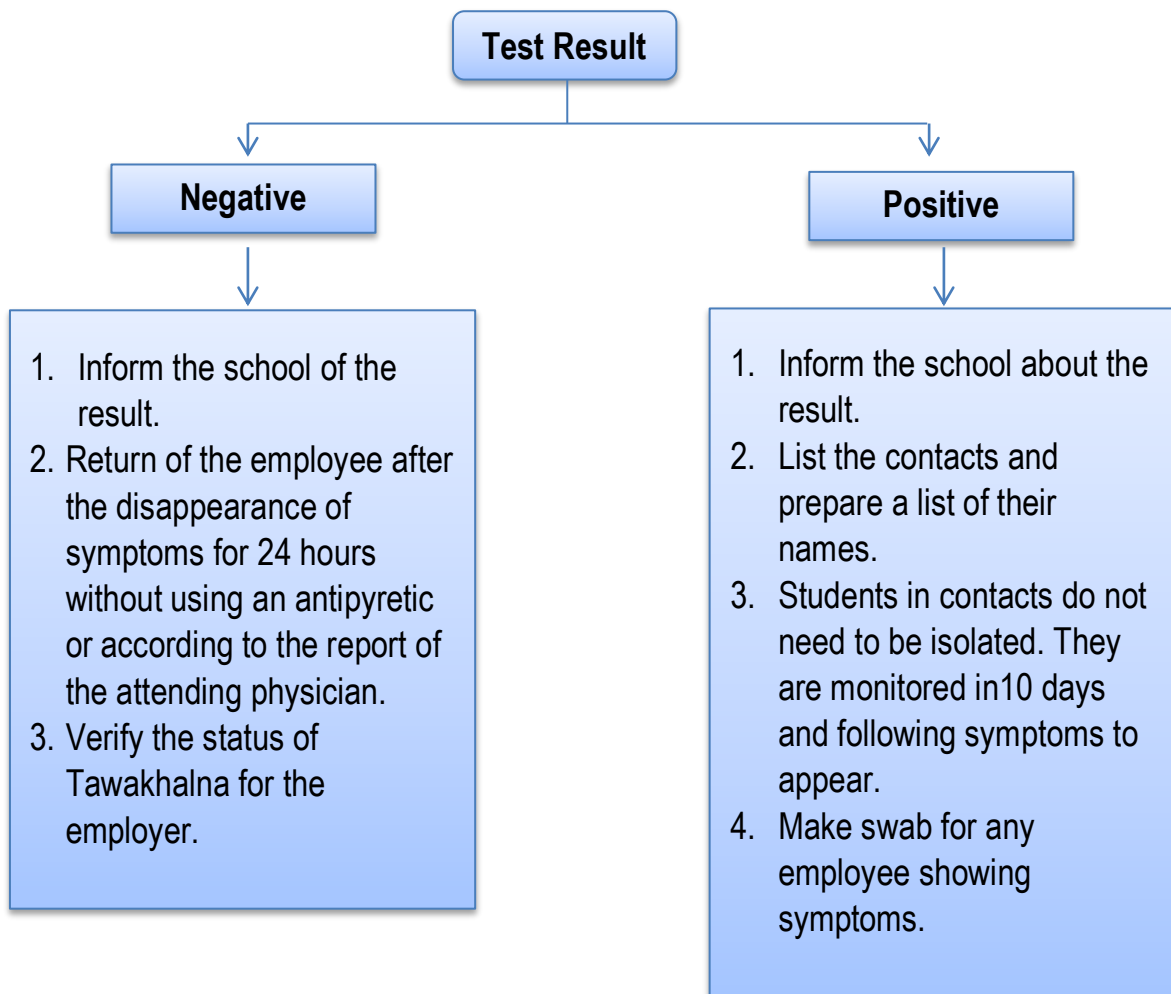


**Dealing with secondary cases of the first case and those in contact with it (fully vaccinated with two dose):**



**Procedure to be followed while detecting a suspected case for staff (fully vaccinated):**

- Isolate the case until it leaves the school.
- Reduce friction with the rest of the staff.
- Follow up the case and direct it the necessity of taking the swab
- Follow up the case and direct it to the necessity of taking the swab for a PCR test



**Notice:**

- Students who are in contact with others or others are not to be examined in the laboratory unless they show any of the symptoms of COVID-19.
- School studies are not to be suspended except in coordination with education departments and health affairs directorates in the region.